

EasyFMD Installation Guide No. 1

Standalone

Last updated 23 August 2022

Introduction

EasyFMD can be installed on a standalone machine to which no one else will have access, or it can be installed on a network server and accessed from multiple client machines. You **CANNOT** install two separate copies of EasyFMD on two separate machines pointing to two separate data files. This is prohibited by the terms of the [Software License Agreement](#)

This guide will explain a standalone type installation. If you require a different type of installation then please select a different guide from our [Downloads Page](#).

If you are unsure which type of installation is best for your organisation, then please contact our Customer Helpline number above and we can advise accordingly.

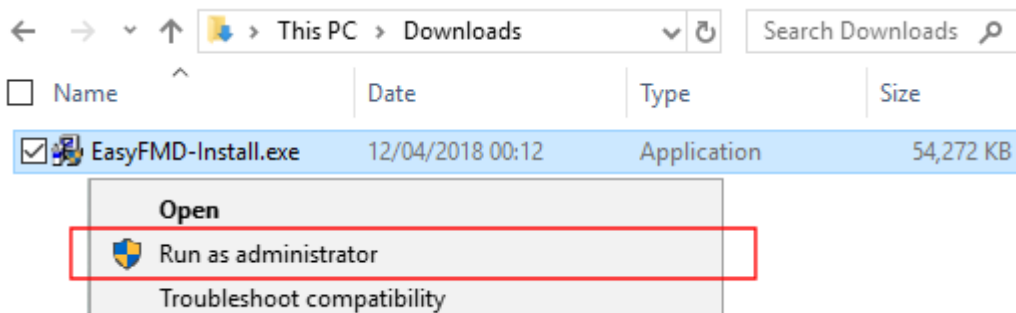
Before you proceed, it is advisable that you download the latest version v2.0.0.0 of the EasyFMD installation program from our [Downloads Page](#) When downloading, if you are prompted to 'Run' or 'Save' we would advise that you choose 'Save', as you may need to run the installation program a number of times depending on which, if any, of the two prerequisites are already installed on your machine.

Prerequisites

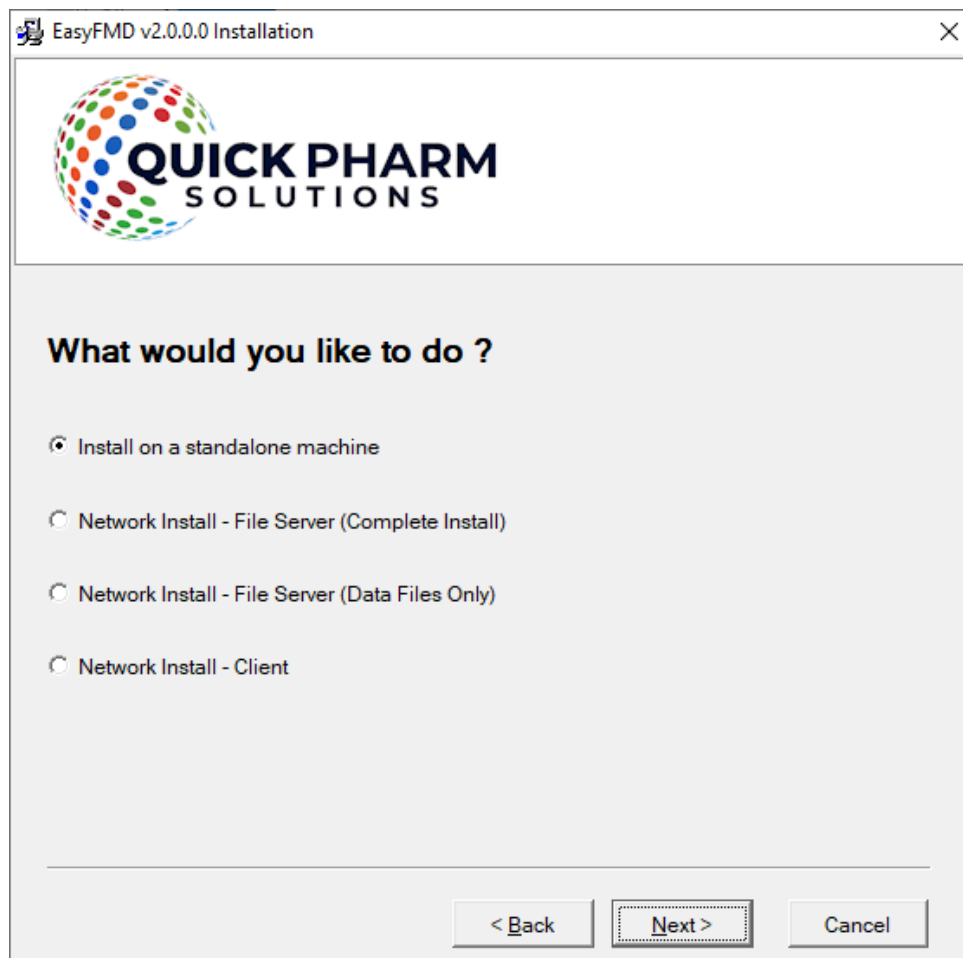
Before EasyFMD can be installed on a machine, 'Microsoft .NET Framework 4.8' and 'Crystal Reports Runtime' must also be installed. If you are running Windows 10 or later, then 'Microsoft .NET Framework 4.8' will be installed already as part of the operating system. 'Crystal Reports Runtime' may or may not be installed already, depending on what other applications you have previously installed on the machine. The EasyFMD installation program will automatically detect if either of these two prerequisites are not installed and will guide you to the relevant download for each, if required.

Step 1 - Installing EasyFMD On A Standalone Machine

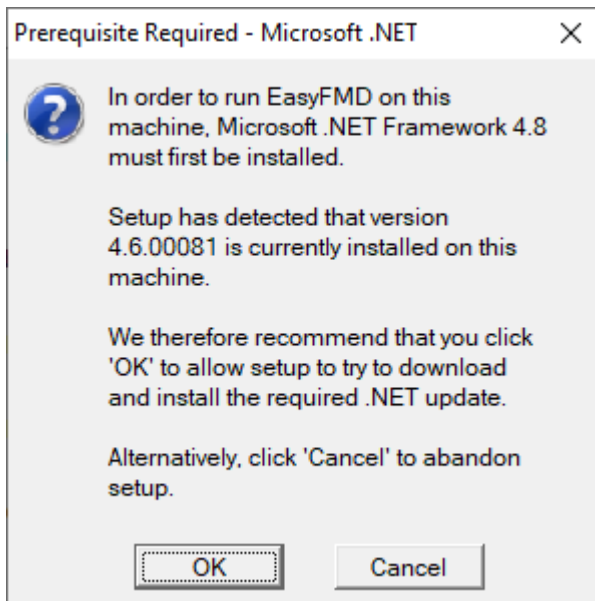
- 1.1) First ensure that you are logged into the local machine as the Administrator (or equivalent).
- 1.2) Right click on EasyFMD-Install.exe and select 'Run as administrator' (as shown below). If prompted by User Account Control, click 'Yes' to allow the installation program to run with full administrator permissions.



- 1.3) The 'Welcome' screen should now be displayed. Click on 'Next'.
- 1.4) Read the terms of the software license agreement. If you agree, click on 'I Agree'.
- 1.5) When prompted 'What would you like to do?', ensure that 'Install on a standalone machine' is selected (as shown below) and click on 'Next'.

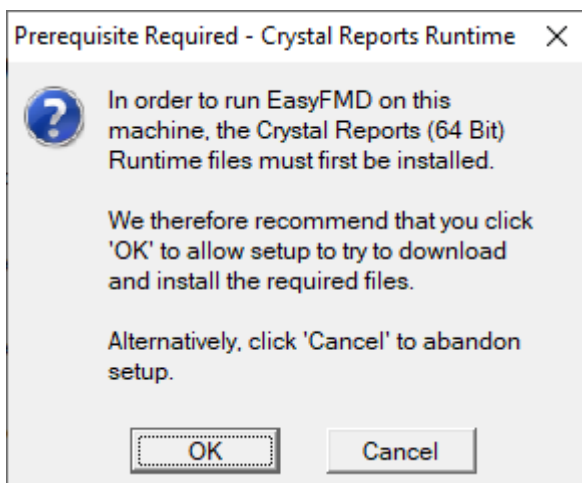


- 1.6) At this stage the installation program will check if the two prerequisites mentioned above are installed. If a message similar to the one below appears, then this means that the first prerequisite, 'Microsoft .NET Framework 4.8', is not installed on this machine. If this message is not displayed, proceed directly to step 1.7 below.



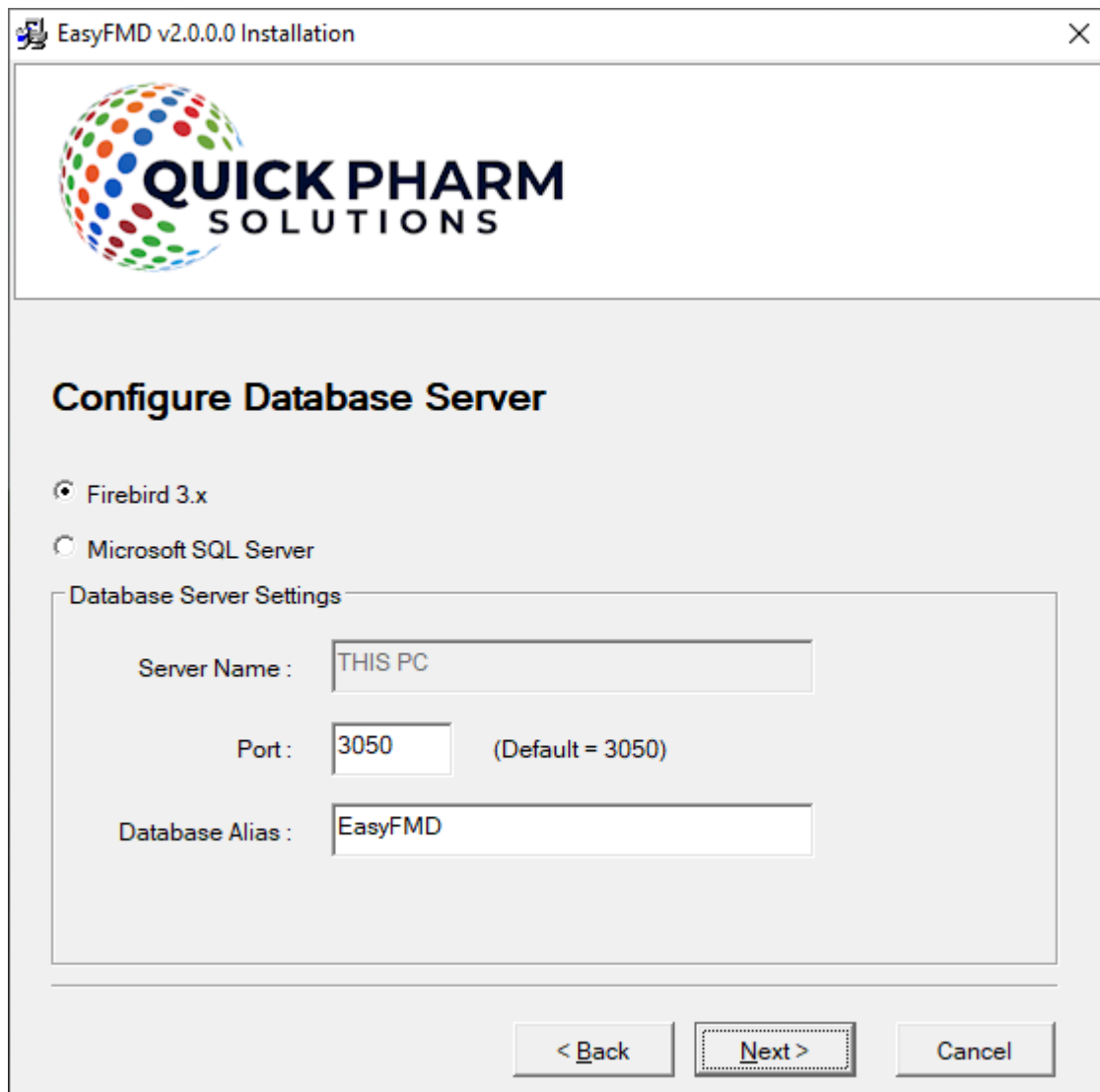
By clicking on 'OK' the EasyFMD installation program will begin to download and automatically install the 'Microsoft .NET Framework 4.8' from the Microsoft website. This may take a few minutes so please be patient. Once 'Microsoft .NET Framework 4.8' is installed, the EasyFMD installation program will automatically proceed to step 1.7.

- 1.7) If a message similar to the one below appears, then this means that the second prerequisite, the required 'Crystal Reports Runtime' files are not installed on this machine. If this message is not displayed, proceed directly to step 1.8 below.



By clicking on 'OK' the EasyFMD installation program will begin to download and automatically install the 'Crystal Reports Runtime' installation program. This may take a few minutes so please be patient. Once the 'Crystal Reports Runtime' files have been installed, the EasyFMD installation program will automatically proceed to step 1.8.

- 1.8) If the 'Configure Database Server' screen is displayed (as shown below), then this means that the two prerequisites are in fact installed and the EasyFMD installation program can continue, so just click on 'Next' to accept the default server settings.



- 1.9) When prompted to select 'Destination Folder' just click on 'Next' to accept the default folder.
- 1.10) When prompted to select 'Data File Folder' we strongly advise that you leave the default data folder as is, so just click on 'Next' to accept the default folder.
- 1.11) Click on 'Next' to accept the default 'Program Manager Group' of EasyFMD.
- 1.12) When prompted with 'Start Installation', click on 'Next'.
- 1.13) When 'Installation Complete' is displayed, click on 'Finish'.
- 1.14) You should now be able to run and log in to EasyFMD by clicking on the EasyFMD icon on your desktop.
- 1.15) When prompted, enter the default 'User Name' and 'Password' that were provided in the confirmation email that you should have received after you downloaded the EasyFMD installation program.
- 1.16) When you run EasyFMD for the very first time it will need to build the database and do some initial configuration. Just click on 'Ok' when prompted.

- 1.17) When the EasyFMD 'Main Menu' is displayed, then you have successfully installed EasyFMD on your machine.
- 1.18) At this point, if you have never used EasyFMD before, then we would suggest that you click on Help >> Getting Started (at the top right) and have a read through this section of the help file. It will take about 10 to 15 minutes, but will guide you through everything you need to know re setting the system up initially, as well as giving you a complete step by step guide to connecting to your National Hub and verifying your first pack of medicine.

If having followed the above steps and you are still having an issue installing EasyFMD, then please contact our Customer Helpline number above.