

EasyFMD Installation Guide No. 3

Changing PCs

Last updated 23 August 2022

Introduction

EasyFMD can be installed on a standalone machine to which no one else will have access, or it can be installed on a network server and accessed from multiple client machines. You **CANNOT** install two separate copies of EasyFMD on two separate machines pointing to two separate data files. This is prohibited by the terms of the [Software License Agreement](#)

This guide will explain how to move EasyFMD from an existing standalone machine to a new standalone machine (e.g. migrate to new machine). If you require a different type of installation then please select a different guide from our [Downloads Page](#)

If you are unsure which type of installation is best for your organisation, then please contact our Customer Helpline number above and we can advise accordingly.

Steps Involved

In order to successfully move EasyFMD from one machine to another, there are three essential steps that need to be carried out in sequence, as follows :-

- 1) Install EasyFMD on the new machine.
- 2) Copy your existing data file from the existing machine to the new machine.
- 3) Uninstall EasyFMD from the existing machine.

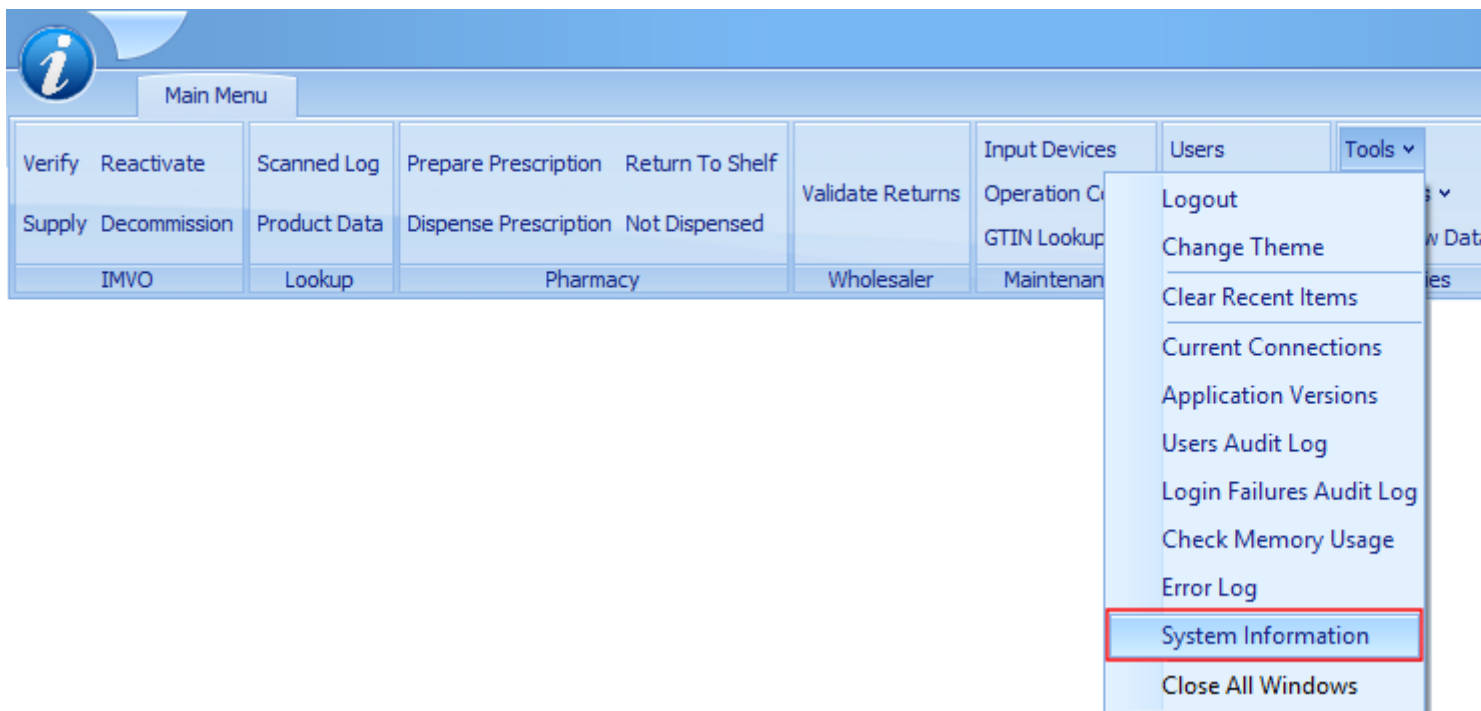
You **CANNOT** simply copy the EasyFMD folder from one machine to another. This will **NOT** work. You must follow each of these three steps as outlined in detail below.

Requirements

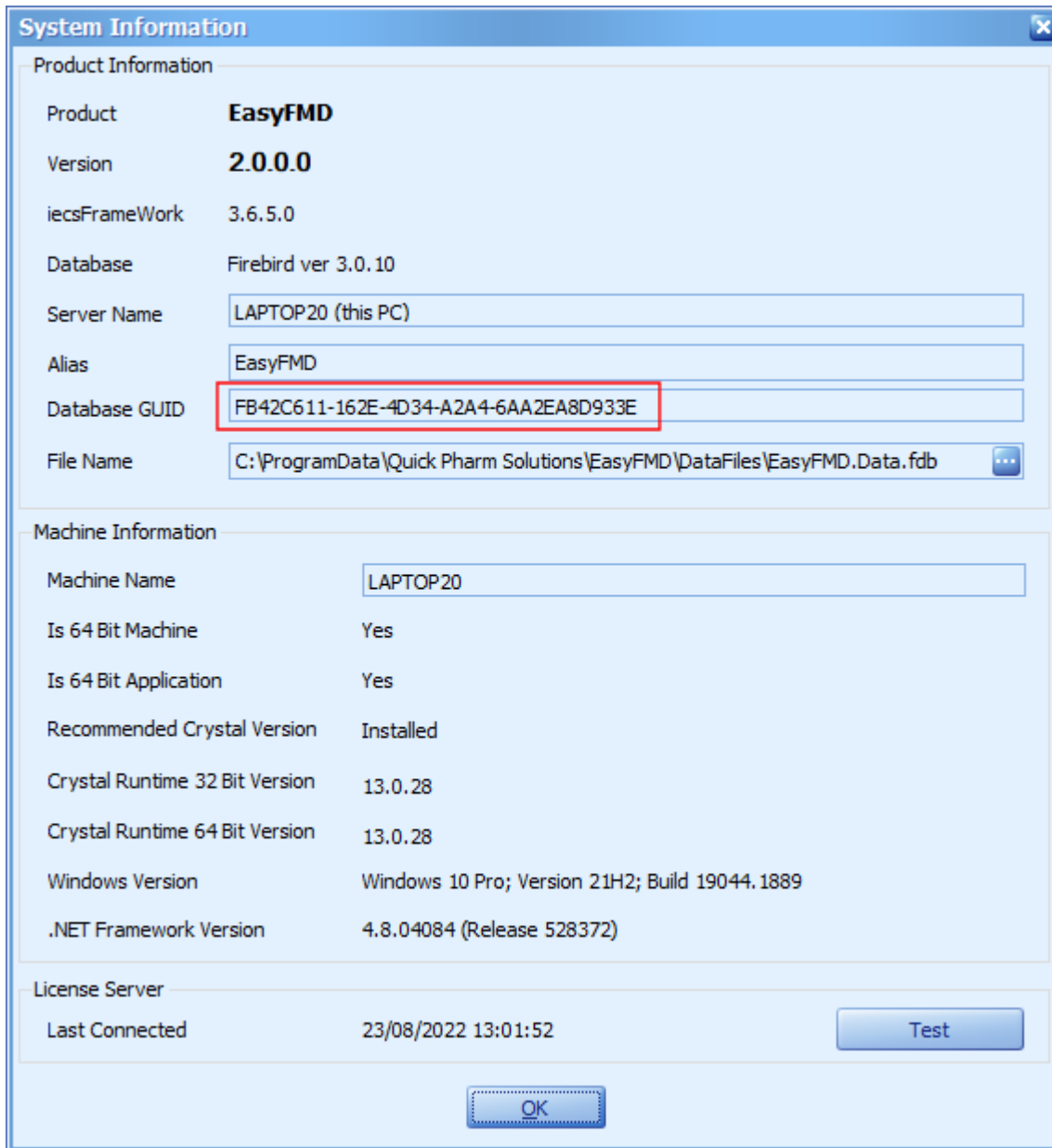
Before you proceed, it is advisable that you download the latest version of the EasyFMD installation program from our [Downloads Page](#). When downloading, if you are prompted to 'Run' or 'Save' we would advise that you choose 'Save', as you may need to run the installation program a number of times depending on which, if any, of the two prerequisites are already installed on your machine.

You will also need a USB key, an external hard disk or some other mechanism of copying the data file from one machine to the other.

Before you start, you should run EasyFMD on the existing machine and go into Utilities >> Tools >> System Information.



Make a note of the 'Database GUID' displayed (as shown below). We will use this later to check that you have successfully copied across your existing data.

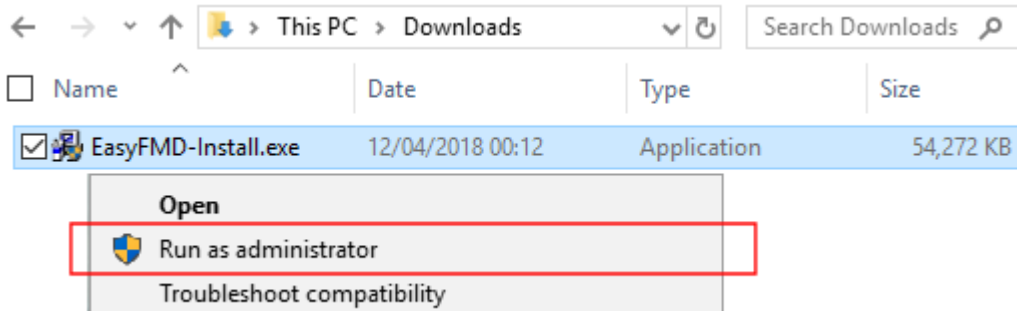


Prerequisites

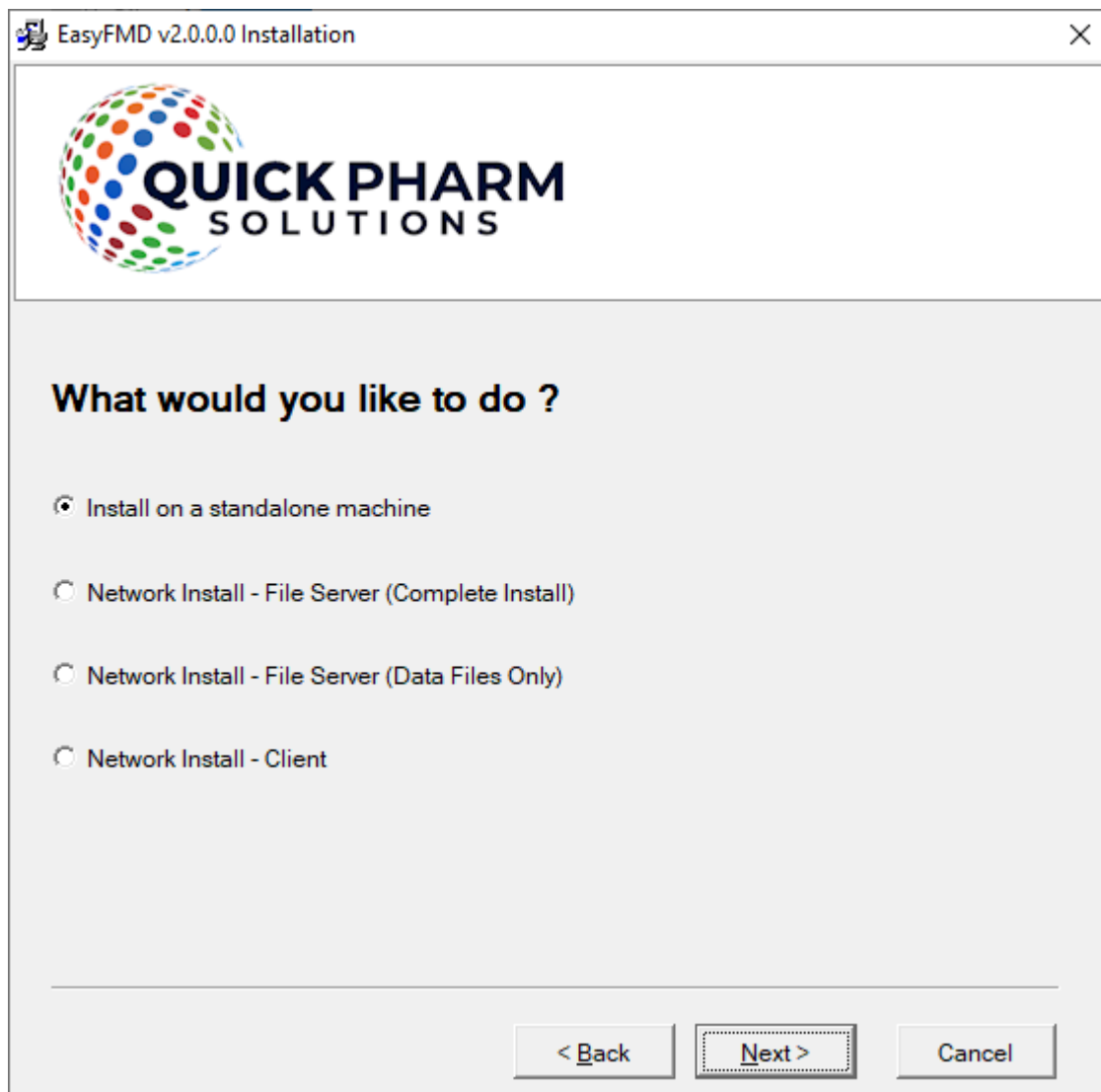
Before EasyFMD can be installed on a machine, 'Microsoft .NET Framework 4.8' and 'Crystal Reports Runtime' must also be installed. If you are running Windows 10 or later, then 'Microsoft .NET Framework 4.8' will be installed already as part of the operating system. 'Crystal Reports Runtime' may or may not be installed already, depending on what other applications you have previously installed on the machine. The EasyFMD installation program will automatically detect if either of these two prerequisites are not installed and will guide you to the relevant download for each, if required.

Step 1 - Install EasyFMD to New Machine

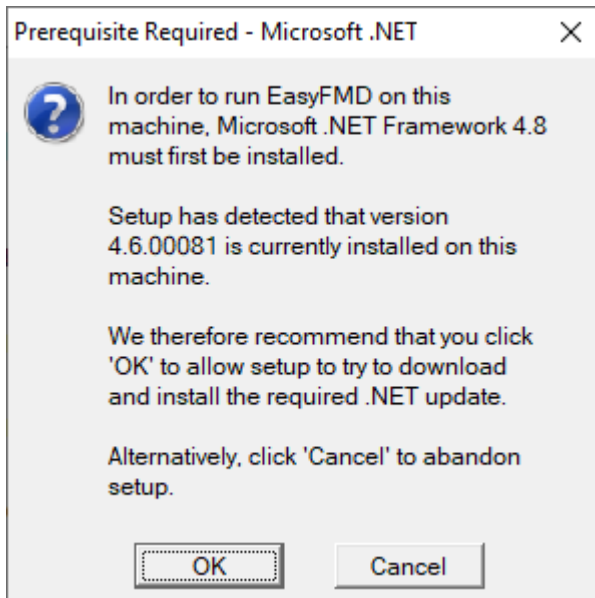
- 1.1) First ensure that you are logged into the new machine as the Administrator (or equivalent).
- 1.2) Right click on EasyFMD-Install.exe and select 'Run as administrator' (as shown below). If prompted by User Account Control, click 'Yes' to allow the installation program to run with full administrator permissions.



- 1.3) The 'Welcome' screen should now be displayed. Click on 'Next'.
- 1.4) Read the terms of the software license agreement. If you agree, click on 'I Agree'.
- 1.5) When prompted 'What would you like to do?', ensure that 'Install on a standalone machine' is selected (as shown below) and click on 'Next'.

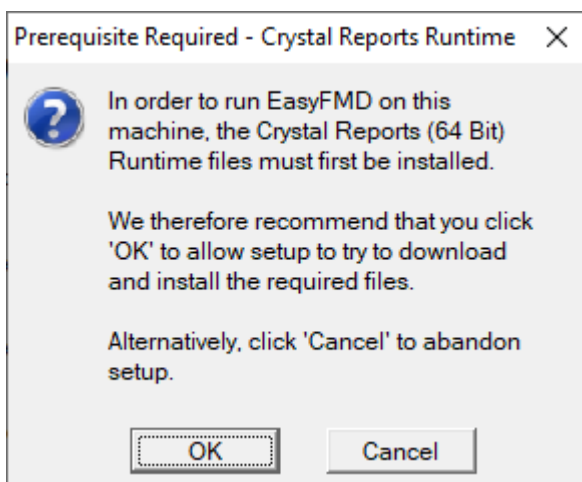


- 1.6) At this stage the installation program will check if the two prerequisites mentioned above are installed. If a message similar to the one below appears, then this means that the first prerequisite, 'Microsoft .NET Framework 4.8', is not installed on this machine. If this message is not displayed, proceed directly to step 1.7 below.



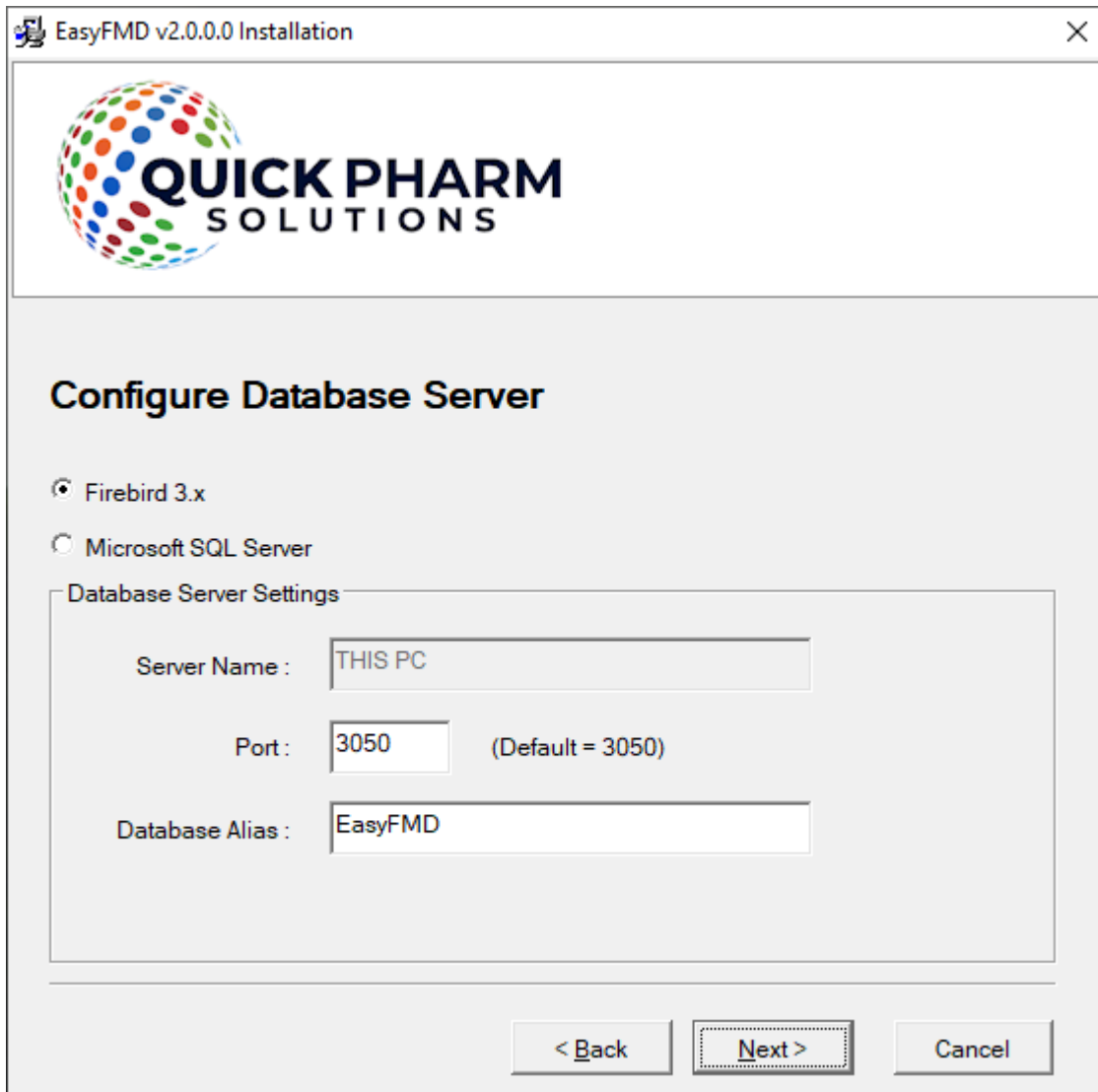
By clicking on 'OK' the EasyFMD installation program will begin to download and automatically install the 'Microsoft .NET Framework 4.8' from the Microsoft website. This may take a few minutes so please be patient. Once 'Microsoft .NET Framework 4.8' is installed, the EasyFMD installation program will automatically proceed to step 1.7.

- 1.7) If a message similar to the one below appears, then this means that the second prerequisite, the required 'Crystal Reports Runtime' files are not installed on this machine. If this message is not displayed, proceed directly to step 1.8 below.



By clicking on 'OK' the EasyFMD installation program will begin to download and automatically install the 'Crystal Reports Runtime' installation program. This may take a few minutes so please be patient. Once the 'Crystal Reports Runtime' files have been installed, the EasyFMD installation program will automatically proceed to step 1.8.

- 1.8) If the 'Configure Database Server' screen is displayed (as shown below), then this means that the two prerequisites are in fact installed and the EasyFMD installation program can continue, so just click on 'Next' to accept the default server settings.



- 1.9) When prompted to select 'Destination Folder' just click on 'Next' to accept the default folder.
- 1.10) When prompted to select 'Data File Folder' we strongly advise that you leave the default data folder as is, so just click on 'Next' to accept the default folder.
- 1.11) Click on 'Next' to accept the default 'Program Manager Group' of EasyFMD.
- 1.12) When prompted with 'Start Installation', click on 'Next'.
- 1.13) When 'Installation Complete' is displayed, click on 'Finish'.
- 1.14) You should now be able to run and log in to EasyFMD by clicking on the EasyFMD icon on your desktop.
- 1.15) Please bear in mind that we haven't copied across your existing data yet, so for the moment this is a new blank database. So when prompted, enter the default 'User Name' and 'Password' that were provided in the confirmation email that you should have received after you downloaded the EasyFMD installation program. Your existing logon credentials will, almost certainly, NOT work just yet.
- 1.16) When you run EasyFMD for the very first time it will need to build the database and do some initial configuration. Just click on 'Ok' when prompted.

- 1.17) When the EasyFMD 'Main Menu' is displayed, then you have successfully installed EasyFMD on your machine, albeit that you have a blank database.
- 1.18) At this point you need to exit completely out of EasyFMD in order to copy across your existing data.

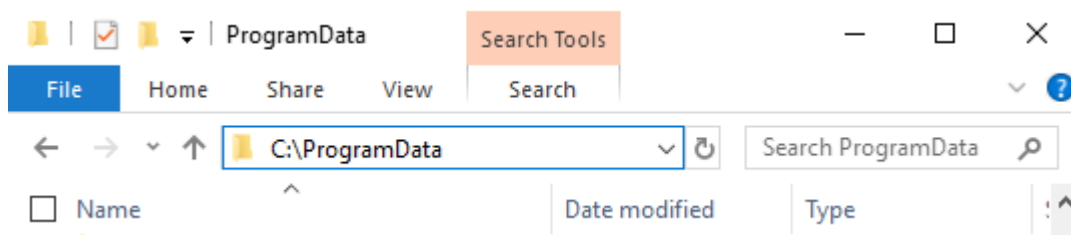
Step 2 - Copy Existing EasyFMD Data File to New Machine

Now that EasyFMD is installed and working on the new machine, albeit with a blank database, the next step is to copy all your existing data from the existing machine to the new machine.

All your EasyFMD data is contained in a single database file called **EasyFMD.Data.fdb** and by default this file will be in a 'C:\ProgramData\Quick Pharm Solutions\EasyFMD\DataFiles' folder on your existing machine.

Important : The folder you are looking for is 'C:\ProgramData' which is completely different to 'C:\Program Files'.

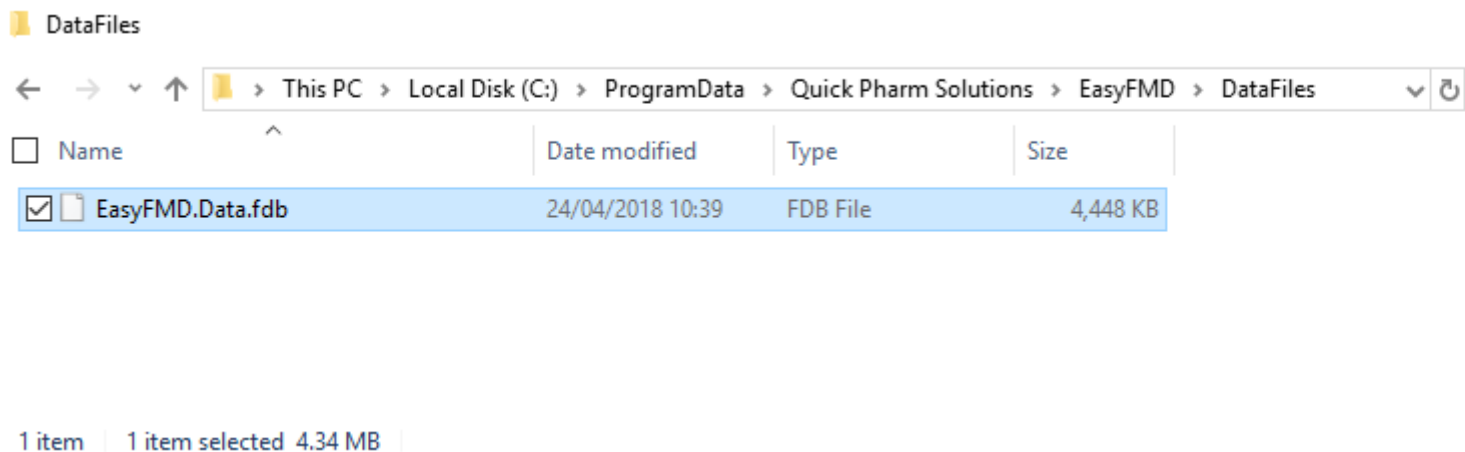
The 'C:\ProgramData' folder is normally hidden and may not be visible when you try to browse all the folders on your C: drive. If this is the case then simply type 'C:\ProgramData' in to the top of the Windows Explorer address bar (as shown below) to show the contents of this hidden folder.



Important : Before you can copy your data, you need to exit completely out of EasyFMD on both the existing and new machines.

Once you have exited out of EasyFMD on both machines and browsed to the appropriate 'DataFiles' folder, you can now copy the **EasyFMD.Data.fdb** file from the existing machine to a USB key or to an external hard disk. It is also a good idea at this point to make a note of the size of your existing data file.

Once the file has been copied, unplug the USB key (or external hard disk) from the existing machine and plug it into the new machine. If you browse to the 'C:\ProgramData\Quick Pharm Solutions\EasyFMD\DataFiles' folder on the new machine you should see an EasyFMD.Data.fdb already in this folder. This is the new blank database that was installed by step 1 above and it should be about 4-5 MB in size (as shown below).



Delete this file and copy the data file from the USB key (or external hard disk) into this same folder. Once copied on, check the file size now displayed. It should be bigger than 5 MB and should match the file size that you noted from the existing machine (above).

Important : Do not copy the data file from the USB key to your 'C:\Program Files\Quick Pharm Solutions' folder, or to any other folder on your new computer for that matter. This will not work. It must be copied to the exact same folder that contains the new blank database as installed by step 1 above.

At this point you should now be able to run EasyFMD on the new machine and log in using the same 'User Name' and 'Password' that you would have used previously on the existing machine.

To check that your data has been copied across successfully, go into Security >> System Options and check that your 'License Details' and 'National Hub' settings are displayed.

Next go into Maintenance >> Input Devices and you should see the settings for any devices previously configured (e.g. your existing machine).

Finally go into Utilities >> Tools >> System Information and check the 'Database GUID' displayed. If it matches what you noted from the Requirements section at the start of this document then you have successfully copied across your existing data.

Step 3 - Uninstall EasyFMD from Existing Machine

At this point it is recommended that you uninstall EasyFMD from the existing machine. There are two main reasons for doing this :-

Firstly, and as mentioned previously, you cannot have two separate copies of EasyFMD on two separate machines pointing to two separate data files. This is prohibited by the terms of the [Software License Agreement](#)

Please see [Uninstalling EasyFMD](#) for full step by step instructions on how to uninstall EasyFMD from the existing machine.

If having followed the above steps and you are still having an issue installing EasyFMD, then please contact our Customer Helpline number above.