

EasyFMD Installation Guide No. 5

New Client PC

Last updated 23 August 2022

Introduction

EasyFMD can be installed on a standalone machine to which no one else will have access, or it can be installed on a network server and accessed from multiple client machines. You **CANNOT** install two separate copies of EasyFMD on two separate machines pointing to two separate data files. This is prohibited by the terms of the [Software License Agreement](#)

This guide will explain a client type installation where your EasyFMD data is already stored on your server and you now want to access it from a new client machine. If you require a different type of installation then please select a different guide from our [Downloads Page](#)

If you are unsure which type of installation is best for your organisation, then please contact our Customer Helpline number above and we can advise accordingly.

Steps Involved

In order to successfully install EasyFMD on a new client machine, there are two essential steps that need to be carried out in sequence, as follows :-

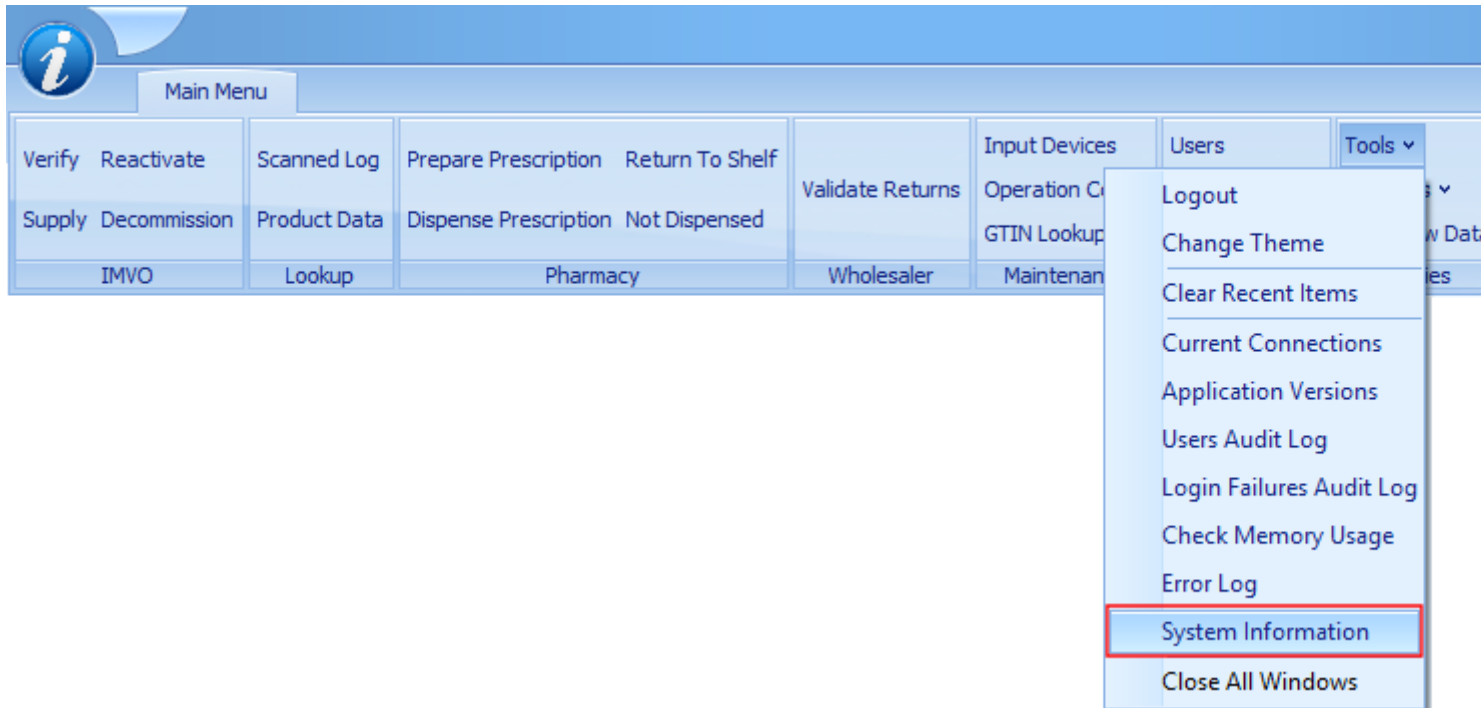
- 1) Install EasyFMD on the new client machine.
- 2) Check that you can see your existing data on the server.

You **CANNOT** simply copy the EasyFMD folder from an existing client machine to another. This will **NOT** work. You must follow each of these two steps as outlined in detail below.

Requirements

Before you proceed, it is advisable that you download the latest version v2.0.0.0 of the EasyFMD installation program from our [Downloads Page](#). When downloading, if you are prompted to 'Run' or 'Save' we would advise that you choose 'Save', as you may need to run the installation program a number of times depending on which, if any, of the two prerequisites are already installed on your machine.

If you already have EasyFMD installed and working on one or more other client machines, then before you can start you will need to know the name of the server that your EasyFMD data is currently on, as well as the underlying database being used. You can find this out by running EasyFMD on any existing client machine and clicking on Utilities >> Tools >> System Information.



Make a note of both the 'Database' and the 'Server Name' displayed (as shown below). You should also make a note of the 'Database GUID' displayed. We will use this later to check that the new client machine can see the same data as your existing client machine(s).

Product Information	
Product	EasyFMD
Version	2.0.0.0
iecsFrameWork	3.6.5.0
Database	Firebird ver 3.0.10
Server Name	LAPTOP20 (this PC)
Alias	EasyFMD
Database GUID	FB42C611-162E-4D34-A2A4-6AA2EA8D933E
File Name	C:\ProgramData\Quick Pharm Solutions\EasyFMD\DataFiles\EasyFMD.Data.fdb

Machine Information	
Machine Name	LAPTOP20
Is 64 Bit Machine	Yes
Is 64 Bit Application	Yes
Recommended Crystal Version	Installed
Crystal Runtime 32 Bit Version	13.0.28
Crystal Runtime 64 Bit Version	13.0.28
Windows Version	Windows 10 Pro; Version 21H2; Build 19044.1889
.NET Framework Version	4.8.04084 (Release 528372)

License Server	
Last Connected	23/08/2022 13:01:52

Prerequisites

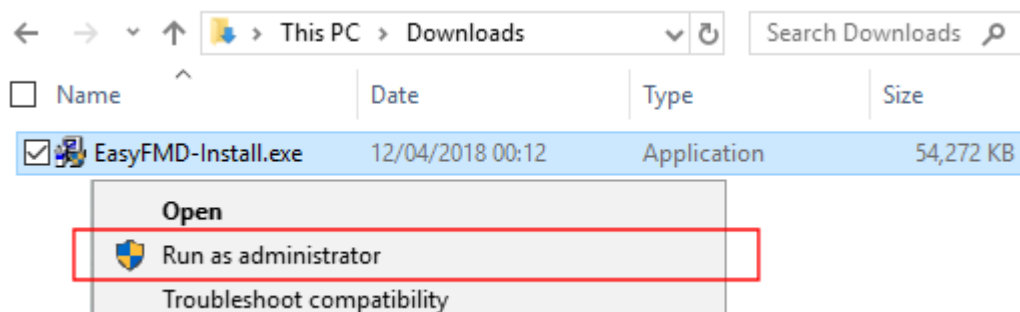
Before EasyFMD can be installed on a machine, 'Microsoft .NET Framework 4.8' and 'Crystal Reports Runtime' must also be installed. If you are running Windows 10 or later, then 'Microsoft .NET Framework 4.8' will be installed already as part of the operating system. 'Crystal Reports Runtime' may or may not be installed already, depending on what other applications you have previously installed on the machine. The EasyFMD installation program will automatically detect if either of these two prerequisites are not installed and will guide you to the relevant download for each, if required.

Step 1 - Installing EasyFMD On A Client Machine

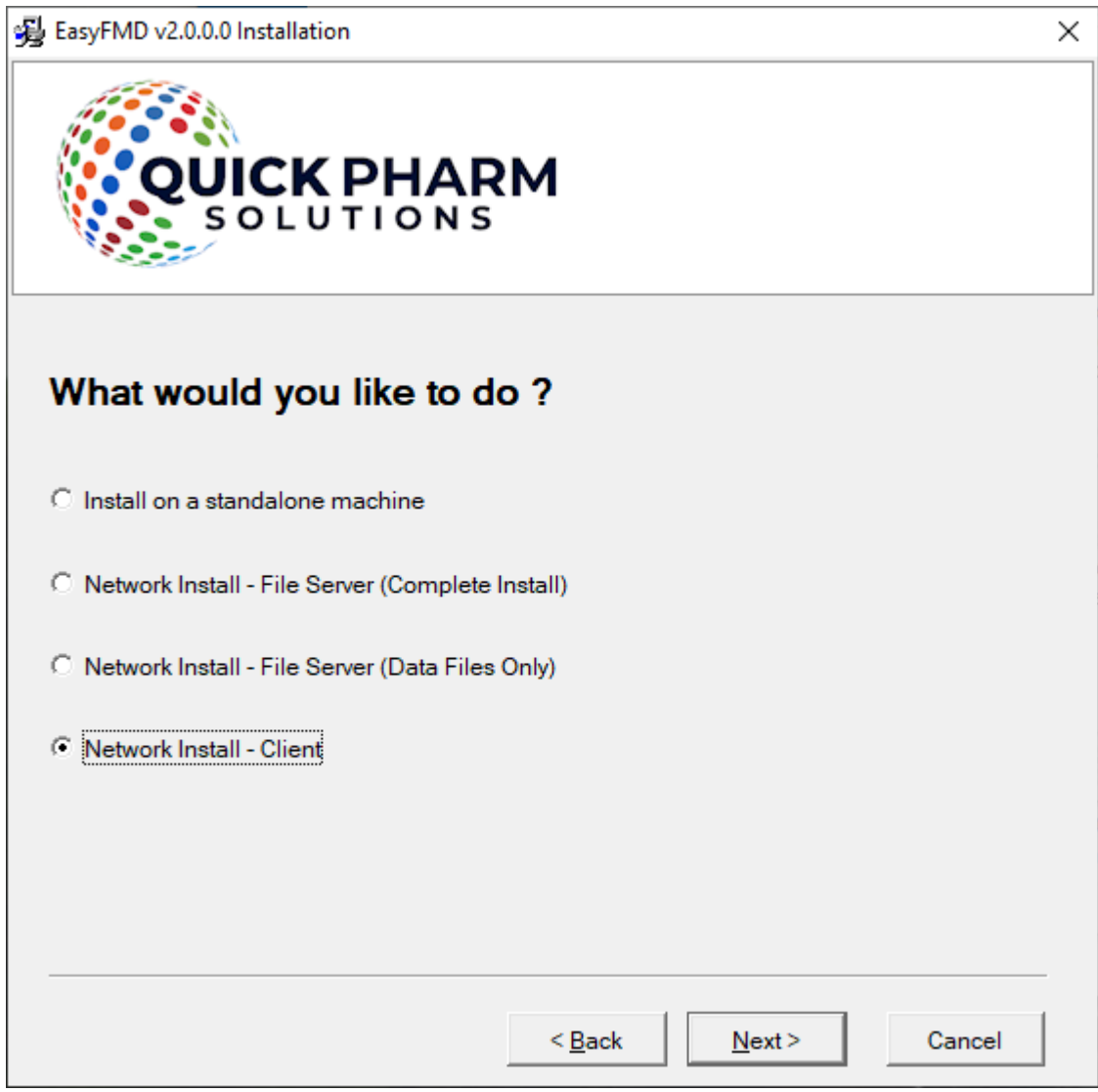
Very Important : If you already have EasyFMD installed and working on one or more client machines, then before doing the install on the new machine, you will need to ensure that ALL your existing machines have been updated and are already running the latest version v2.0.0.0. You **CANNOT** have different versions of EasyFMD on different machines. All machines **MUST** be running the same version. If you do install a newer

version on the new client machine, then all your existing machines may be prevented from running EasyFMD, until they have been updated to the same version.

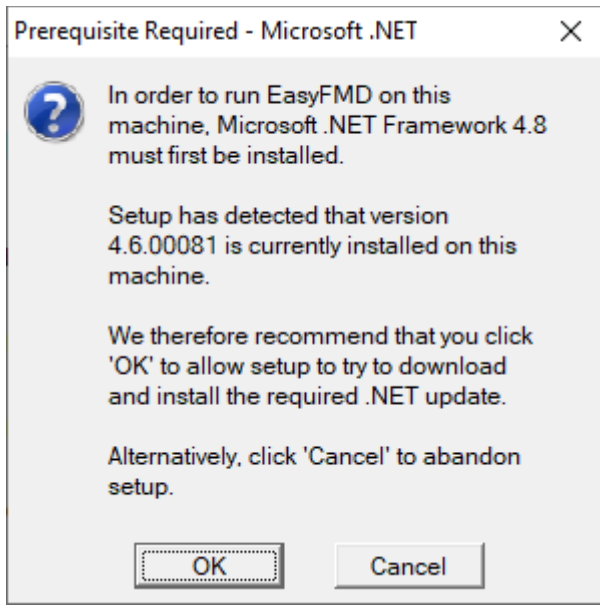
- 1.1) First ensure that you are logged into the local machine as the Administrator (or equivalent).
- 1.2) Right click on EasyFMD-Install.exe and select 'Run as administrator' (as shown below). If prompted by User Account Control, click 'Yes' to allow the installation program to run with full administrator permissions.



- 1.3) The 'Welcome' screen should now be displayed. Click on 'Next'.
- 1.4) Read the terms of the software license agreement. If you agree, click on 'I Agree'.
- 1.5) When prompted 'What would you like to do?', ensure that 'Network Install - Client' is selected (as shown below).

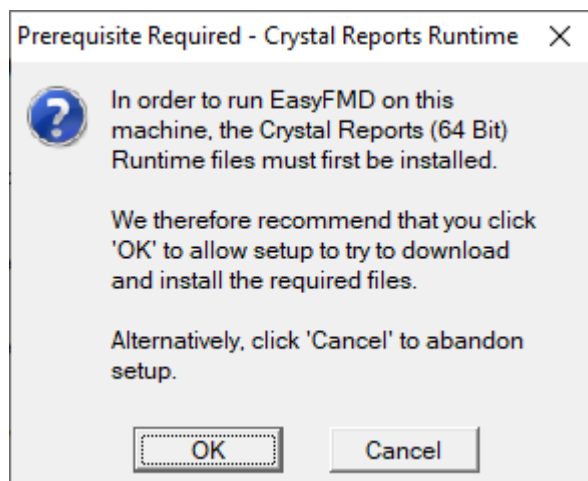


1.6) At this stage the installation program will check if the two prerequisites mentioned above are installed. If a message similar to the one below appears, then this means that the first prerequisite, 'Microsoft .NET Framework 4.8', is not installed on this machine. If this message is not displayed, proceed directly to step 1.7 below.



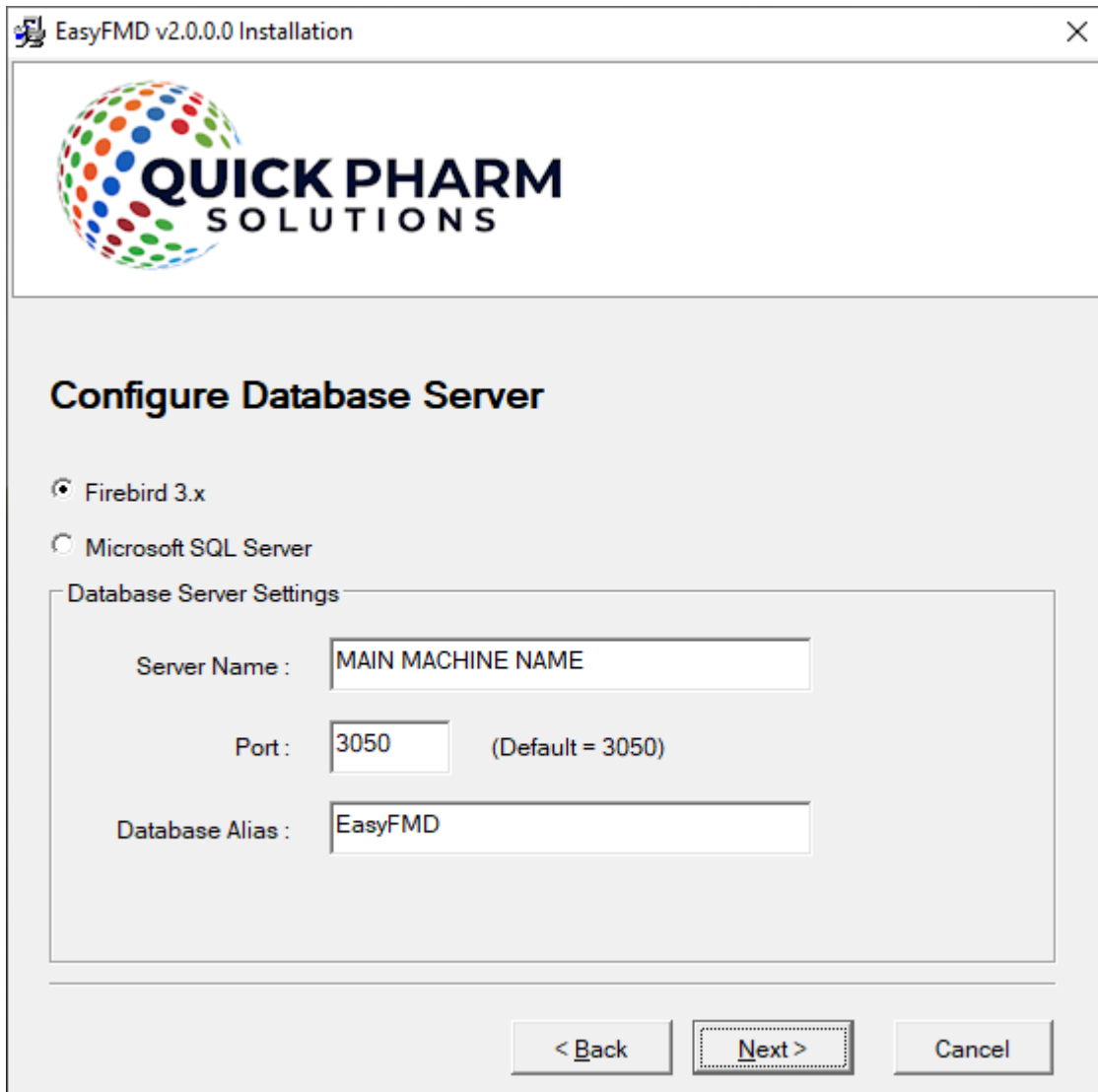
By clicking on 'OK' the EasyFMD installation program will begin to download and automatically install the 'Microsoft .NET Framework 4.8' from the Microsoft website. This may take a few minutes so please be patient. Once 'Microsoft .NET Framework 4.8' is installed, the EasyFMD installation program will automatically proceed to step 1.7.

- 1.7) If a message similar to the one below appears, then this means that the second prerequisite, the required 'Crystal Reports Runtime' files are not installed on this machine. If this message is not displayed, proceed directly to step 1.8 below.



By clicking on 'OK' the EasyFMD installation program will begin to download and automatically install the 'Crystal Reports Runtime' installation program. This may take a few minutes so please be patient. Once the 'Crystal Reports Runtime' files have been installed, the EasyFMD installation program will automatically proceed to step 1.8.

- 1.8) If the 'Configure Database Server' screen is displayed (as shown below), then this means that the two prerequisites are in fact installed.



The new client machine needs to be configured to use the same underlying database as your existing client machine(s). So choose either 'Firebird' or 'Microsoft SQL Server' depending on the database that you noted from the Requirements section at the start of this document.

Next ensure that the correct server name is entered. This should be the same server name that you also noted from the Requirements section at the start of this document.

Note : When entering the server name do NOT use UNC notation (e.g. \\MAINMACHINENAME is incorrect and will not work). Just enter the machine name of the server without any leading backslashes or spaces (e.g. MAINMACHINENAME).

Once you have selected your database and entered the correct server name, click on 'Next'.

- 1.9) When prompted to select 'Destination Folder' just click on 'Next' to accept the default folder.
- 1.10) Click on 'Next' to accept the default 'Program Manager Group' of EasyFMD.
- 1.11) When prompted with 'Start Installation', click on 'Next'.
- 1.12) When 'Installation Complete' is displayed, click on 'Finish'.

- 1.13) You should now be able to run and log in to EasyFMD by clicking on the EasyFMD icon on your desktop.
- 1.14) If this is the first client machine that EasyFMD has been installed on, then when prompted, enter the default 'User Name' and 'Password' that were provided in the confirmation email that you should have received after you downloaded the EasyFMD installation program.

If on the other hand, you already have EasyFMD installed and working on one or more other client machines, then you can use your existing logon credentials.

- 1.15) If EasyFMD is being run for the very first time, it will need to build the database and do some initial configuration. Just click on 'Ok' if prompted.
- 1.16) When the EasyFMD 'Main Menu' is displayed, then you have successfully installed EasyFMD on the client machine.
- 1.17) At this point, if you have never used EasyFMD before, then we would suggest that you click on Help >> Getting Started (at the top right) and have a read through this section of the help file. It will take about 10 to 15 minutes, but will guide you through everything you need to know re setting the system up initially, as well as giving you a complete step by step guide to connecting to your National Hub and verifying your first pack of medicine.

Step 2 - Check Existing Data

To check that you can see your existing data, go into Security >> System Options and check that your 'License Details' and 'National Hub' settings are displayed.

Next go into Maintenance >> Input Devices and you should see the settings for any devices previously configured (e.g. the 'main' machine).

Finally go into Utilities >> Tools >> System Information and check the 'Database GUID' displayed. If it matches what you noted from the Requirements section at the start of this document then you have successfully configured the new client machine to use the 'shared' data file from the 'main' machine.

If having followed the above steps and you are still having an issue installing EasyFMD, then please contact our Customer Helpline number above.