

EazyEFT Installation Guide #6

Last updated 14 March 2022

Introduction

EazyEFT can be installed on a standalone machine to which no one else will have access, or it can be installed on a network server and accessed from multiple client machines. You **CANNOT** install two separate copies of EazyEFT on two separate machines pointing to two separate data files. This is prohibited by the terms of the [Software License Agreement](#)

This guide will explain how to move EazyEFT from an existing standalone machine to a client / server type installation where your EazyEFT data will be stored on your server and this data can then be accessed by one or more client machines running EazyEFT. If you require a different type of installation then please select a different guide from our [Installation Guides](#)

If you are unsure which type of installation is best for your organisation, then please contact our Customer Helpline number above and we can advise accordingly.

Steps Involved

In order to successfully move EazyEFT from an existing standalone machine to a client / server type installation, there are five essential steps that need to be carried out in sequence, as follows :-

- 1) Install EazyEFT on the server.
- 2) Copy the existing data file from the existing standalone machine to the server.
- 3) Install EazyEFT to a new client machine.
- 4) Uninstall EazyEFT from the existing machine.
- 5) Reinstall EazyEFT on the existing machine to now point to the data file on the server.

You **CANNOT** simply copy the EazyEFT folder from the existing machine to the server. This will **NOT** work. You must follow each of these five steps as outlined in detail below.

Requirements

Before you proceed, it is advisable that you download the latest version v3.0.0.0 of the EazyEFT installation program from our [Downloads Page](#). When downloading, if you are prompted to 'Run' or 'Save' we would advise that you choose 'Save', as you will use this

same installation program to do the initial install on the server and then to do the client install on each required client machine.

You will also need a USB key, an external hard disk or some other mechanism of copying the data file from the existing machine to the server.

Before you start, you should run EazyEFT on the existing machine and go into Payments >> Files Created. When you click on 'Go' all the previously created files will be listed. Make a note of the 'Internal Reference' of the most recent file. We will use this later to check that you have successfully copied across the existing data.

Transfer File Type	Transaction Type	Internal Reference	Requested Date	Business To Business	File Creation Date	Number Of Transactions	Value Of Transactions
SEPA XML File	Debits	5000093	07/09/2016	<input type="checkbox"/>	02/09/2016 13:47	1	10.00
SEPA XML File	Debits	5000092	11/08/2016	<input type="checkbox"/>	03/08/2016 10:19	1	10.00
SEPA XML File	Credits	5000091	25/07/2016	<input type="checkbox"/>	25/07/2016 12:57	2	25.00

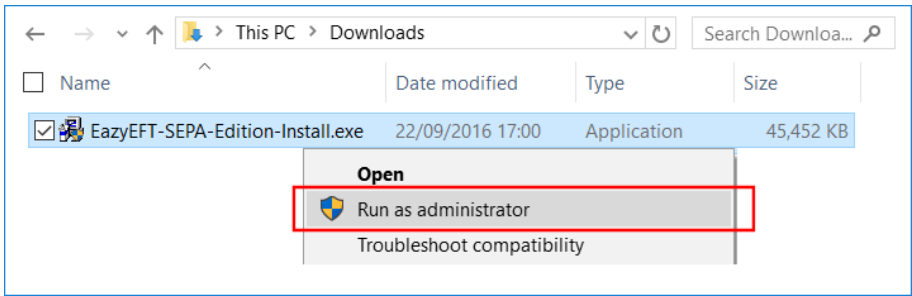
Prerequisites

Before EazyEFT can be installed on a machine, 'Microsoft .Net Framework 4.8' and 'Crystal Reports Runtime' must also be installed. If you are running Windows 10 / Windows Server 2012 or later, then 'Microsoft .Net Framework 4.8' will be installed already as part of the operating system. 'Crystal Reports Runtime' may or may not be installed already, depending on what other applications you have previously installed on the machine. The EazyEFT installation program will automatically detect if either of these two prerequisites are not installed and will guide you to the relevant download for each, if required.

Step 1 - Installing EazyEFT On The Server

1.1) First ensure that you are logged into the server as the Domain Administrator (or the local machine Administrator). The install must be run on the server itself. Running the install on a client machine and pointing it to a mapped network drive or a network share will NOT work.

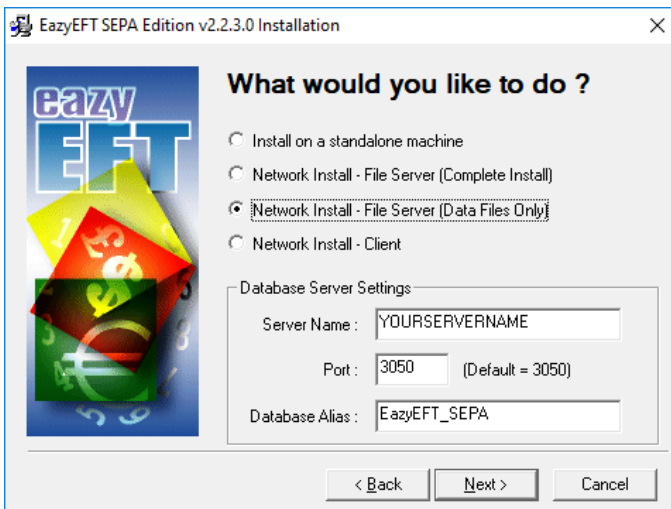
1.2) Right click on EazyEFT-SEPA-Edition-Install.exe and select 'Run as administrator' (as shown below). If prompted by User Account Control, click 'Yes' to allow the installation program to run with full administrator permissions.



1.3) The 'Welcome' screen should now be displayed. Click on 'Next'.

1.4) Read the terms of the software license agreement. If you agree, click on 'I Agree'.

1.5) When prompted 'What would you like to do?', you now have to choose between a 'Complete Install' or the recommended 'Data Files Only' install (as explained below).



Network Install - File Server (Data Files Only) : For the vast majority of our customers, this would be the preferred option. EazyEFT will never actually be run on the server itself. Only the data file will be installed on the server, and it can then be accessed from any number of client machines.

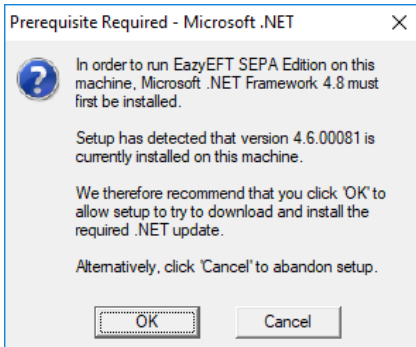
Network Install - File Server (Complete Install) : You really only need to select this option if your users are going to be logging into, and running EazyEFT from, the server itself (e.g. Remote Desktop, Terminal Services, Citrix etc.). If your users are never going to log into the server itself then you should choose the 'Data Files Only' option instead.

Once you have decided on your type of install, make a note of the 'Server Name' displayed. You will need this name later when you go to install EazyEFT on each of your

client machines.

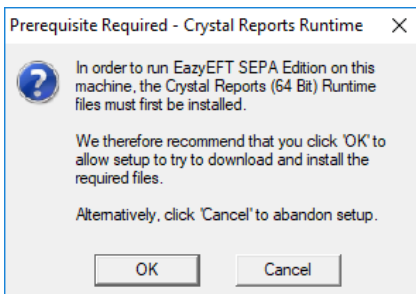
Unless otherwise advised by Lir Software, do not change the default 'Database Server Settings'. If you selected 'Data Files Only' click on 'Next' and proceed directly to step 1.9, otherwise click on 'Next' and continue to step 1.6.

1.6) At this stage the installation program will check if the two prerequisites mentioned above are installed. If a message similar to the one below appears, then this means that the first prerequisite, 'Microsoft .Net Framework 4.8', is not installed on this machine. If this message is not displayed, proceed directly to step 1.7 below.



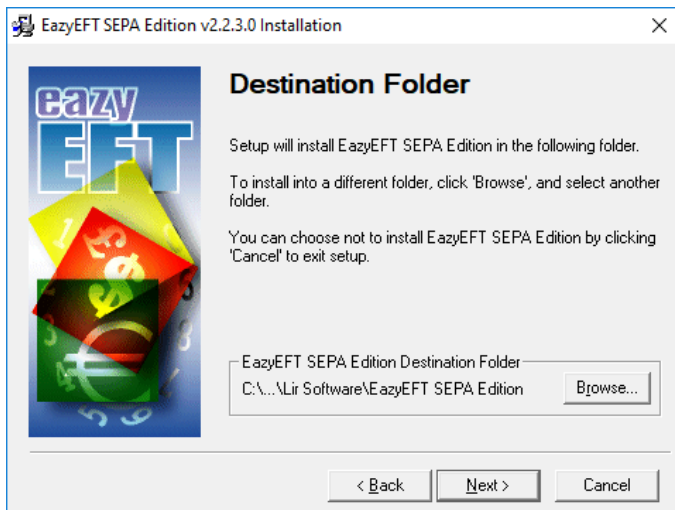
By clicking on 'OK' the EazyEFT installation program will begin to download and automatically install the 'Microsoft .Net Framework 4.8' from the Microsoft website. This may take a few minutes so please be patient. Once 'Microsoft .Net Framework 4.8' is installed, the EazyEFT installation program will automatically proceed to step 1.7.

1.7) If a message similar to the one below appears, then this means that the second prerequisite, the required 'Crystal Reports Runtime' files are not installed on this machine. If this message is not displayed, proceed directly to step 1.8 below.



By clicking on 'OK' the EazyEFT installation program will begin to download and automatically install the 'Crystal Reports Runtime' installation program. This may take a few minutes so please be patient. Once the 'Crystal Reports Runtime' files have been installed, the EazyEFT installation program will automatically proceed to step 1.8.

1.8) If the select 'Destination Folder' screen is displayed (as shown below), then this means that the two prerequisites are in fact installed and the EazyEFT installation program can continue, so just click on 'Next' to accept the default destination folder.



1.9) When prompted to select 'Data File Folder' we strongly advise that you leave the default data folder as is. The EazyEFT data file does NOT need to be (nor should it be) installed to a mapped network drive or a network share. In fact each client machine (and hence your users) do not even need to know where the data file is actually located, so just click on 'Next' to accept the default folder.

1.10) If you selected 'Complete Install', click on 'Next' to accept the default 'Program Manager Group' of EazyEFT SEPA Edition.

1.11) When prompted with 'Start Installation', click on 'Next'.

1.12) When 'Installation Complete' is displayed, click on 'Finish'.

1.13) If you selected 'Data Files Only' proceed directly to step 2 below. If you selected 'Complete Install', you should now be able to run and log in to EazyEFT by clicking on the EazyEFT SEPA Edition icon on your desktop.

1.14) Please bear in mind that we haven't copied across the existing data yet, so for the moment this is a new blank database. So when prompted, enter the default 'User Name' and 'Password' that were provided in the confirmation email that you should have received after you downloaded the EazyEFT installation program. Your existing logon credentials will, almost certainly, NOT work just yet.

1.15) When you run EazyEFT for the very first time it will need to build the database and do some initial configuration. Just click on 'OK' when prompted.

1.16) When the EazyEFT 'Main Menu' and 'Home Screen' are displayed, then you have successfully installed EazyEFT on the server, albeit that you have a blank database.

1.17) At this point you need to exit completely out of EazyEFT in order to copy across the existing data.

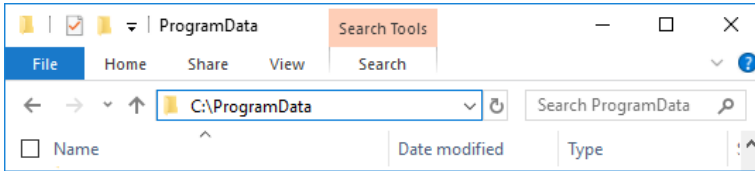
Step 2 - Copy Existing EazyEFT Data File To Server

The next step is to copy all your existing data from the existing machine to the server. All your EazyEFT data is contained in a single database file called **EazyEFT.SepaEdition.Data.fdb** and by default this file will be in a 'C:\ProgramData\Lir Software\EazyEFT SEPA Edition\DataFiles' folder on the existing machine.

Alternatively, you can run EazyEFT on the existing machine, click on Tools >> System Information in the Utilities section and check the 'File Location' displayed.

Important : The folder you are looking for is '**C:\ProgramData**' which is completely different to 'C:\Program Files'.

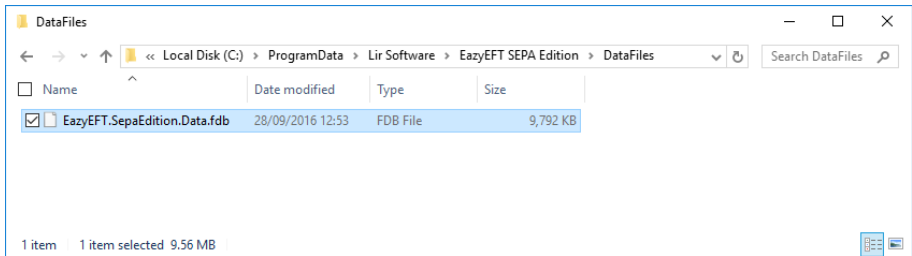
The 'C:\ProgramData' folder is normally hidden and may not be visible when you try to browse all the folders on your C: drive. If this is the case then simply type 'C:\ProgramData' in to the top of the Windows Explorer address bar (as shown below) to show the contents of this hidden folder.



Important : Before you can copy your data, you need to exit completely out of EazyEFT on the existing machine (and also on the server if you selected 'Complete Install').

Once you have exited out of EazyEFT on the existing machine and browsed to the appropriate 'DataFiles' folder, you can now copy the **EazyEFT.SepaEdition.Data.fdb** file from the existing machine to a USB key or to an external hard disk. It is also a good idea at this point to make a note of the size of your existing data file.

Once the file has been copied, unplug the USB key (or external hard disk) from the existing machine and plug it into your server. If you browse to the 'C:\ProgramData\Lir Software\EazyEFT SEPA Edition\DataFiles' folder on your server you should see an EazyEFT.SepaEdition.Data.fdb already in this folder. This is the new blank database that was installed by step 1 above and it should be about 9-10 MB in size (as shown below).



Delete this file and copy the data file from the USB key (or external hard disk) into this same folder. Once copied on, check the file size now displayed. It should be bigger than 10 MB and should match the file size that you noted from the existing machine (above).

Important : Do not copy the data file from the USB key to your 'C:\Program Files\Lir Software' folder, or to any other folder on your server for that matter. This will not work. It must be copied to the exact same folder that contains the new blank database as installed by step 1 above.

To check that the existing data has been copied across successfully proceed to step 3.

Step 3 - Install EazyEFT On New Client Machine

If you have another client machine (in addition to the existing standalone machine) that you would also like to run EazyEFT on, then at this point we would recommend that you do the install on this new client machine first. This will allow you to check that you have copied across your data to the server successfully and that EazyEFT is working on at least one client machine, before you reconfigure the existing standalone machine.

If you do not have another client machine and just want to reconfigure the existing standalone machine, please proceed directly to step 4 below.

Otherwise, please see [Installation Guide #5](#) for full step by step instructions on how to do the required client install and also how to check that you can see the existing data that you have just copied across.

If you have more than one new client machine to install EazyEFT on, then you should repeat the steps in [Installation Guide #5](#) accordingly.

Only when you have EazyEFT installed on at least one other client machine and you have checked that you can see the existing data that you have copied to your server, are you then ready to proceed to step 4 to reconfigure the existing machine.

Step 4 - Uninstall EazyEFT From Existing Machine

At this point you need to uninstall EazyEFT from the existing machine as this is the only way to allow a complete reinstall. Only by doing an uninstall / reinstall can you reconfigure the existing machine to now point to the data file on the server.

Please see [Uninstalling EazyEFT](#) for full step by step instructions on how to uninstall EazyEFT from the existing machine.

Step 5 - Reinstall EazyEFT On Existing Machine

Once both EazyEFT and Firebird have been uninstalled from the existing machine, you can then reference [Installation Guide #5](#) exactly as you did in step 3, for full step by step instructions on how to do the required client install and also how to check that you can see the existing data.

Once you can log back into EazyEFT on the existing machine you can see your previous data, then you have successfully moved EazyEFT to a client / server type installation.

If having followed the above steps and you are still having an issue installing EazyEFT, then please contact our Customer Helpline number above.