

EazyEFT Installation Guide #1

Last updated 14 March 2022

Introduction

EazyEFT can be installed on a standalone machine to which no one else will have access, or it can be installed on a network server and accessed from multiple client machines. You **CANNOT** install two separate copies of EazyEFT on two separate machines pointing to two separate data files. This is prohibited by the terms of the [Software License Agreement](#)

This guide will explain a standalone type installation. If you require a different type of installation then please select a different guide from our [Installation Guides](#)

If you are unsure which type of installation is best for your organisation, then please contact our Customer Helpline number above and we can advise accordingly.

Before you proceed, it is advisable that you download the latest version v3.0.0.0 of the EazyEFT installation program from our [Downloads Page](#). When downloading, if you are prompted to 'Run' or 'Save' we would advise that you choose 'Save', as you may need to run the installation program a number of times depending on which, if any, of the two prerequisites are already installed on your machine.

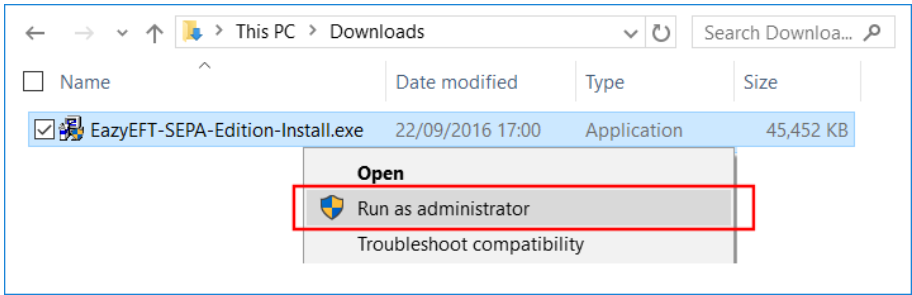
Prerequisites

Before EazyEFT can be installed on a machine, 'Microsoft .Net Framework 4.8' and 'Crystal Reports Runtime' must also be installed. If you are running Windows 10 or later, then 'Microsoft .Net Framework 4.8' will be installed already as part of the operating system. 'Crystal Reports Runtime' may or may not be installed already, depending on what other applications you have previously installed on the machine. The EazyEFT installation program will automatically detect if either of these two prerequisites are not installed and will guide you to the relevant download for each, if required.

Step 1 - Installing EazyEFT On A Standalone Machine

1.1) First ensure that you are logged into the local machine as the Administrator (or equivalent).

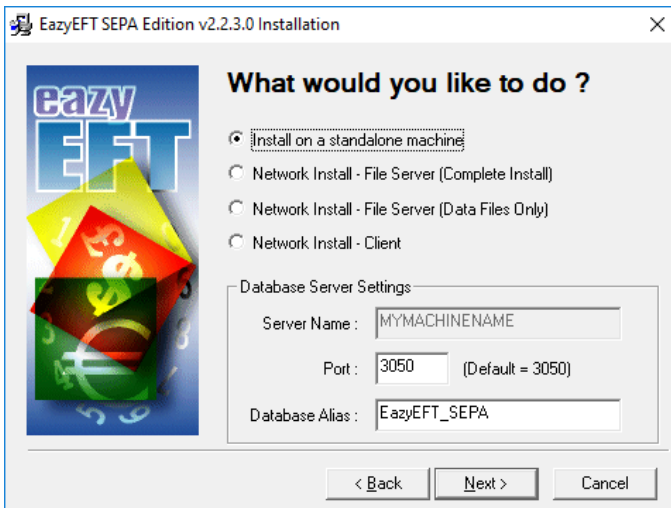
1.2) Right click on EazyEFT-SEPA-Edition-Install.exe and select 'Run as administrator' (as shown below). If prompted by User Account Control, click 'Yes' to allow the installation program to run with full administrator permissions.



1.3) The 'Welcome' screen should now be displayed. Click on 'Next'.

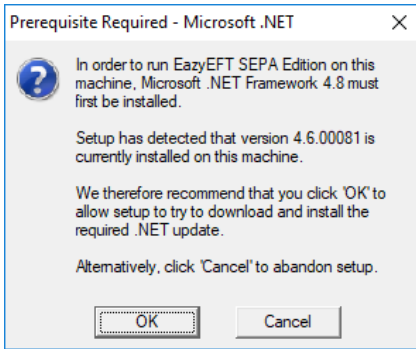
1.4) Read the terms of the software license agreement. If you agree, click on 'I Agree'.

1.5) When prompted 'What would you like to do ?', ensure that 'Install on a standalone machine' is selected (as shown below).



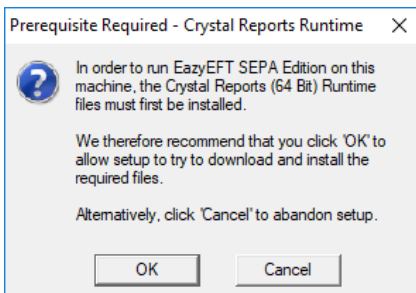
Unless otherwise advised by Lir Software, do not change the default 'Database Server Settings' and just click on 'Next'.

1.6) At this stage the installation program will check if the two prerequisites mentioned above are installed. If a message similar to the one below appears, then this means that the first prerequisite, 'Microsoft .Net Framework 4.8', is not installed on this machine. If this message is not displayed, proceed directly to step 1.7 below.



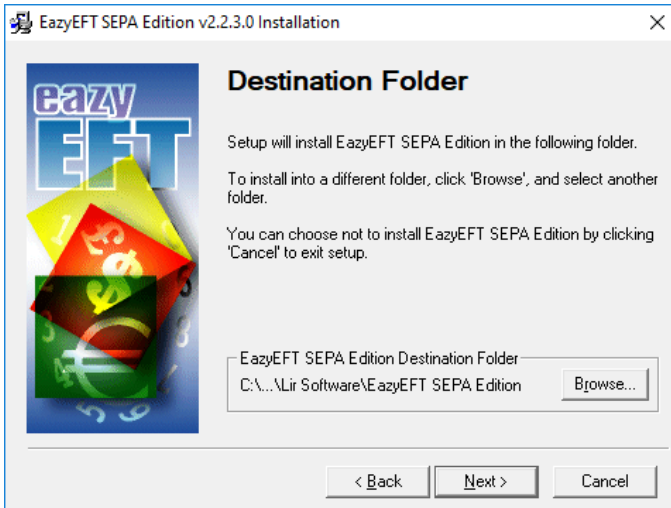
By clicking on 'OK' the EazyEFT installation program will begin to download and automatically install the 'Microsoft .Net Framework 4.8' from the Microsoft website. This may take a few minutes so please be patient. Once 'Microsoft .Net Framework 4.8' is installed, the EazyEFT installation program will automatically proceed to step 1.7.

1.7) If a message similar to the one below appears, then this means that the second prerequisite, the required 'Crystal Reports Runtime' files are not installed on this machine. If this message is not displayed, proceed directly to step 1.8 below.



By clicking on 'OK' the EazyEFT installation program will begin to download and automatically install the 'Crystal Reports Runtime' installation program. This may take a few minutes so please be patient. Once the 'Crystal Reports Runtime' files have been installed, the EazyEFT installation program will automatically proceed to step 1.8.

1.8) If the select 'Destination Folder' screen is displayed (as shown below), then this means that the two prerequisites are in fact installed and the EazyEFT installation program can continue, so just click on 'Next' to accept the default destination folder.



1.9) When prompted to select 'Data File Folder' we strongly advise that you leave the default data folder as is, so just click on 'Next' to accept the default folder.

1.10) Click on 'Next' to accept the default 'Program Manager Group' of EazyEFT SEPA Edition.

1.11) When prompted with 'Start Installation', click on 'Next'.

1.12) When 'Installation Complete' is displayed, click on 'Finish'.

1.13) You should now be able to run and log in to EazyEFT by clicking on the EazyEFT SEPA Edition icon on your desktop.

1.14) When prompted, enter the default 'User Name' and 'Password' that were provided in the confirmation email that you should have received after you downloaded the EazyEFT installation program.

1.15) When you run EazyEFT for the very first time it will need to build the database and do some initial configuration. Just click on 'OK' when prompted.

1.16) When the EazyEFT 'Main Menu' and 'Home Screen' are displayed, then you have successfully installed EazyEFT on your machine.

1.17) At this point, if you have never used EazyEFT before, then we would suggest that you click on Help >> Getting Started (at the top right) and have a read through this section of the help file. It will take about 10-15 minutes, but will guide you through everything you need to know re setting the system up initially, as well as giving you a complete step by step guide to creating your first SEPA file for transmission to your bank.

If having followed the above steps and you are still having an issue installing EazyEFT, then please contact our Customer Helpline number above.

